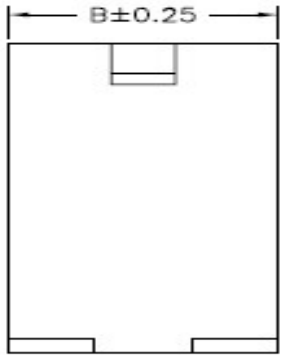
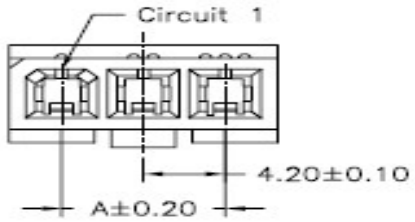
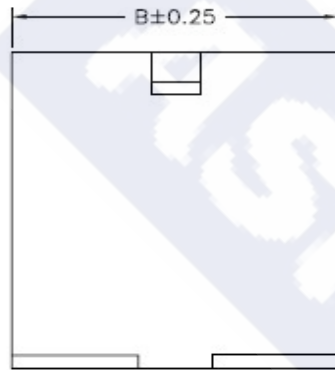
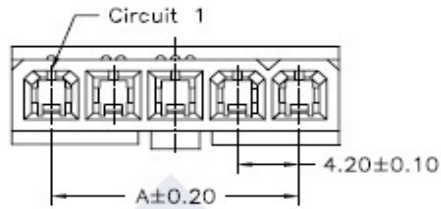
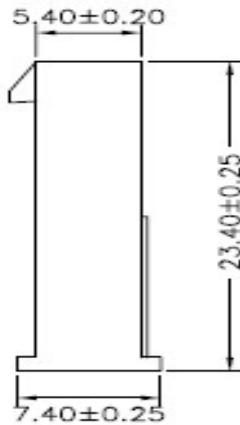


RoHS

Reach



3P



2P,4P,5P



Explanation of PN.

4255J HM XX - X XX

① ② ③ ④ ⑤

- ① Series No.
- ② Connector Type : Male Housing
- ③ Circuits No.
- ④ Insulator Material : 2 : Nylon66, UL 94-V2
3 : Nylon66, UL 94-V0
- ⑤ Color : NL : Natural (Translucent) -- Nylon66, UL 94-V2
WH : White -- Nylon66, UL 94-V0

Specification :

Current Rating : 9A AC,DC

Voltage Rating : 600V AC,DC

Temperature Range : -25°C ~ +85°C

Contact Resistance : 10mΩ Max.

Insulation Resistance : 1000mΩ Min.

Withstanding Voltage : 1500V AC/minute

Insulator Material : Nylon66, UL 94-V2 or
Nylon66, UL 94-V0

Ordering Information & Dimension

Circuits No.	Dimensions	
	A	B
02	4.20	9.60
03	8.40	13.80
04	12.60	18.00
05	16.80	22.20

	DESCRIPTION : 4.20mm Pitch, Housing, Single row, Male Type, Without Mounting Ear	GENERAL TOLERANCE	
	PART NO. : 4255JHMXX-XXX	X.X ± 0.25 X.XX ± 0.15 X.XXX ± 0.05	SCALE : Free