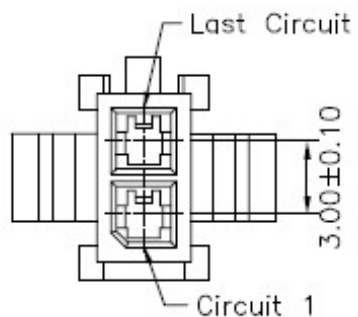
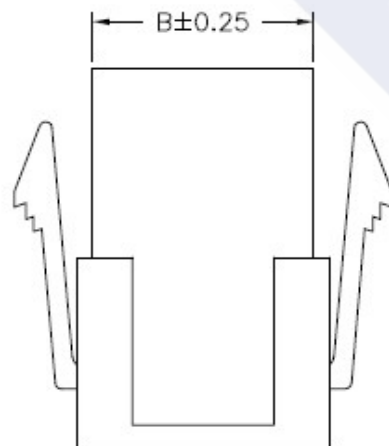
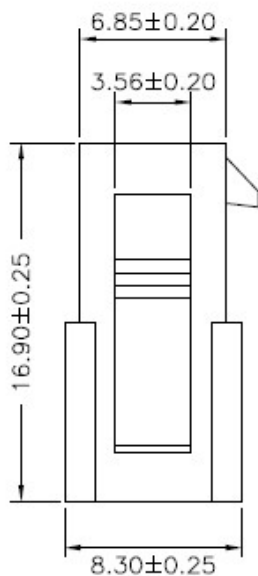
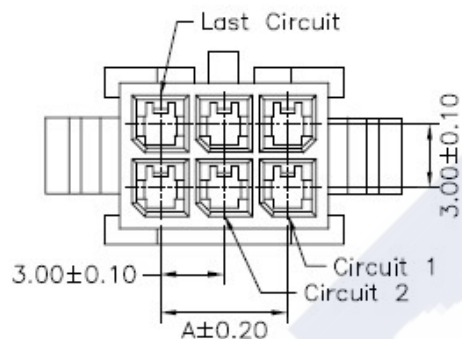


RoHS

Reach



02P



Ordering Information & Dimension

Circuits No.	Dimensions	
	A	B
02	----	3.85
04	3.00	6.85
06	6.00	9.85
08	9.00	12.85
10	12.00	15.85
12	15.00	18.85
14	18.00	21.85
16	21.00	24.85
18	24.00	27.85
20	27.00	30.85
22	30.00	33.85
24	33.00	36.85

Explanation of PN.

3030J HM 1 D XX - X XX

① ② ③ ④ ⑤ ⑥ ⑦

- ① Series No.
 ② Connector Type : Male Housing
 ③ Option Type : With Mounting Ear
 ④ Row Type : Dual Row
 ⑤ Circuits No.
 ⑥ Insulator Material : 2 : Nylon66, UL 94-V2
 3 : Nylon66, UL 94-V0
 7 : Nylon66, UL 94-V2(No Flame)
 ⑥ Color : BK : Black -- Nylon66, UL 94-V2
 BK : Black -- Nylon66, UL 94-V0
 NL : Natural (Beige) -- Nylon66, UL 94-V2(No Flame)

Specification :

Current Rating : 5A AC,DC

Voltage Rating : 250V AC,DC

Temperature Range : -25°C ~ +85°C

Contact Resistance : 10mΩ Max.

Insulation Resistance : 1000mΩ Min.

Withstanding Voltage : 1500V AC/minute

Insulator Material : Nylon66, UL 94-V2 or
Nylon66, UL 94-V0 or
Nylon66, UL 94-V2(No Flame)

DESCRIPTION :
 3.00mm Pitch, Housing,
 Dual row, Male Type,
 With Mounting Ear

PART NO. :
 3030JHM1DXX-XXX

GENERAL TOLERANCE

X.X ± 0.25
 X.XX ± 0.15
 X.XXX ± 0.05

SCALE : Free

