

RoHS

Reach

Explanation of PN.

**2505J HM XX - 3 BK**

① ② ③ ④ ⑤

- ① Series No.
- ② Connector Type : Male Housing
- ③ Circuits No.
- ④ Insulator Material : Nylon66, UL 94-V0
- ⑤ Color : Black

Specification :

Current Rating : 3A AC,DC

Voltage Rating : 250V AC,DC

Temperature Range : -25°C ~ +85°C

Contact Resistance : 10mΩ Max.

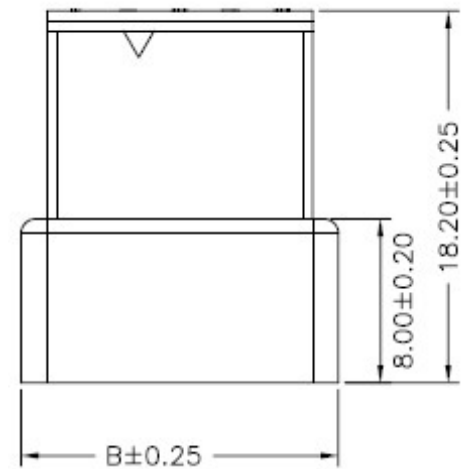
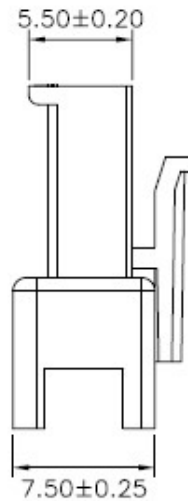
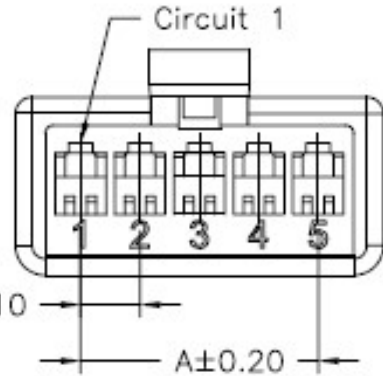
Insulation Resistance : 500mΩ Min.


Withstanding Voltage : 1500V AC/minute

Insulator Material : Nylon66, UL 94-V0

## Ordering Information &amp; Dimension

Circuits No.	Dimensions	
	A	B
02	2.50	8.00
03	5.00	10.50
04	7.50	13.00
05	10.00	15.50
06	12.50	18.00
07	15.00	20.50
08	17.50	23.00
09	20.00	25.50
10	22.50	28.00
11	25.00	30.50
12	27.50	33.00



	<b>DESCRIPTION :</b> <b>2.50mm Pitch, Housing,</b> <b>Single row, Male Type</b>	<b>GENERAL TOLERANCE</b>	
	<b>PART NO. :</b> <b>2505JHMXX-3BK</b>	X.X ± 0.25 X.XX ± 0.15 X.XXX ± 0.05	SCALE : Free 