

RoHS

Reach

Explanation of PN.

**7920J R A XX - 2 NL 0**

① ② ③ ④ ⑤ ⑥ ⑦

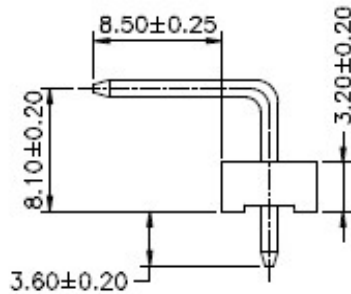
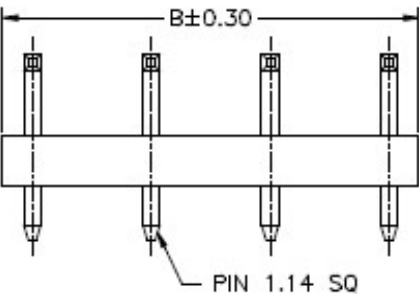
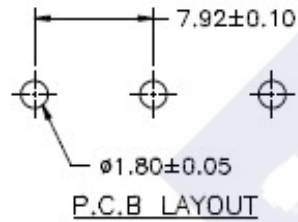
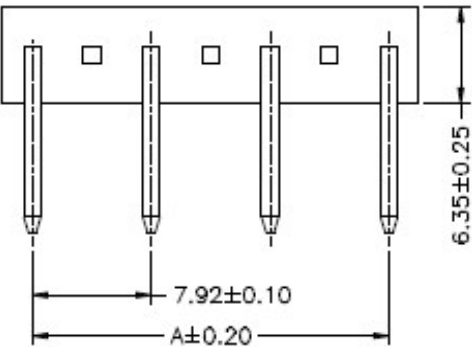
- ① Series No.
- ② Connector Type : Right Angle
- ③ Option Type : A Type
- ④ Circuits No.
- ⑤ Insulator Material : 2 : Nylon66, UL 94-V2
- ⑥ Color : NL : Natural (Translucent)
- ⑦ Contact Plating : Tin-plated,


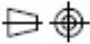
Ordering Information & Dimension

| Circuit No. | Dimensions |       |
|-------------|------------|-------|
|             | A          | B     |
| 02          | 7.92       | 11.88 |
| 03          | 15.84      | 19.80 |
| 04          | 23.76      | 27.72 |
| 05          | 31.68      | 35.64 |
| 06          | 39.60      | 43.56 |
| 07          | 47.52      | 51.48 |
| 08          | 55.44      | 59.40 |
| 09          | 63.36      | 67.32 |
| 10          | 71.28      | 75.24 |

Specification :

- Current Rating : 7A AC,DC
- Voltage Rating : 250V AC,DC
- Temperature Range : -25°C ~ +85°C
- Contact Resistance : 10mΩ Max.
- Insulation Resistance : 1000mΩ Min.
- Withstanding Voltage : 1500V AC/minute
- Pin Material : Brass
- Insulator Material : Nylon66, UL 94-V2



|  |  |   |   |
|--|--|---|---|
|  | <b>DESCRIPTION :</b><br>7.92mm Pitch,<br>Receptacle, Single Row, DIP,<br>Right Angle, A Type | <b>GENERAL TOLERANCE</b>                  |   |
|  | <b>PART NO. :</b><br>7920JRAXX-2NL0  | X.X ± 0.25<br>X.XX ± 0.15<br>X.XXX ± 0.05 | SCALE : Free<br> |