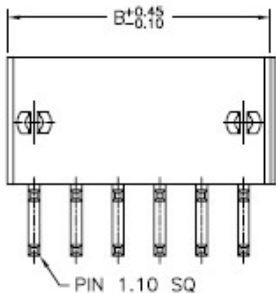
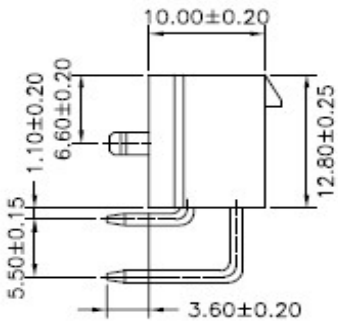
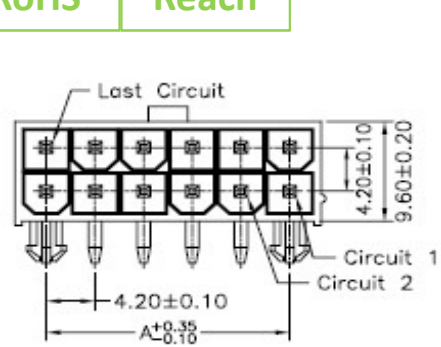
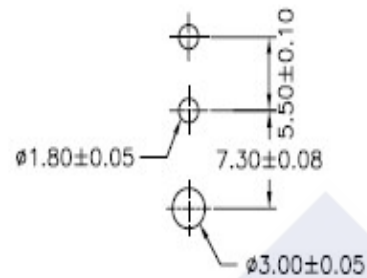
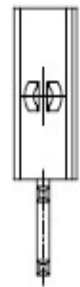


RoHS

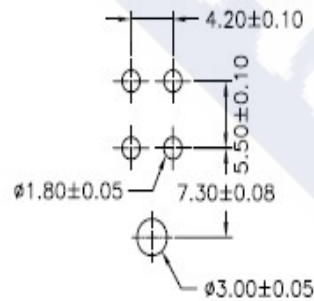
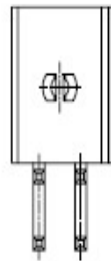
Reach



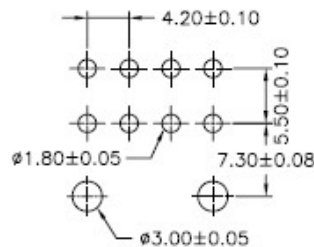
06P~24



02P



04P



Ordering Information & Dimension

Circuits No.	Dimensions	
	A	B
02	---	5.40
04	4.20	9.60
06	8.40	13.80
08	12.60	18.00
10	16.80	22.20
12	21.00	26.40
14	25.20	30.60
16	29.40	34.80
18	33.60	39.00
20	37.80	43.20
22	42.00	47.40
24	46.20	51.60

Explanation of PN.

4255J R F D XX - X XX 0

① ② ③ ④ ⑤ ⑥ ⑦ ⑧

- ① Series No.
- ② Connector Type : Right Angle
- ③ Option Type : With Foot
- ④ Row Type : Dual Row
- ④ Circuits No.
- ⑤ Insulator Material : 2 : Nylon66, UL 94-V2
3 : Nylon66, UL 94-V0
- ⑥ Color : NL : Natural (Translucent) -- Nylon66, UL 94-V2
WH : White -- Nylon66, UL 94-V0
- ⑦ Contact Plating : Tin-plated

Specification :

Current Rating : 9A AC,DC

Voltage Rating : 600V AC,DC

Temperature Range : -25°C ~ +85°C

Contact Resistance : 10mΩ Max.

Insulation Resistance : 1000mΩ Min.

Withstanding Voltage : 1500V AC/minute

Pin Material : Brass

Insulator Material : Nylon66, UL 94-V2

	DESCRIPTION : 4.20mm Pitch, Receptacle, Dual Row, DIP, Right Angle, With Foot	GENERAL TOLERANCE	
	PART NO. : 4255JRFDXX-XXX0	X.X ± 0.25 X.XX ± 0.15 X.XXX ± 0.05	SCALE : Free