

RoHS

Reach

Explanation of PN.

2546J V D XX - 0 BK 2

① ② ③ ④ ⑤ ⑥ ⑦

- ① Series No.
- ② Connector Type : Straight Type
- ③ Row Type : Dual Row
- ④ Circuits No.
- ⑤ Insulator Material : 0 : PBT+GF, UL 94-V0
- ⑥ Color : BK : Black
- ⑦ Contact Plating : 2 : Gold-flash

Specification :

Current Rating : 3A AC,DC

Voltage Rating : 250V AC,DC

Temperature Range : -25°C ~ +85°C

Contact Resistance : 20mΩ Max.

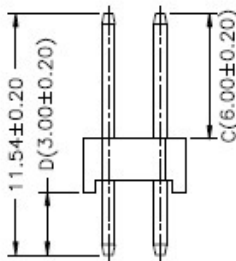
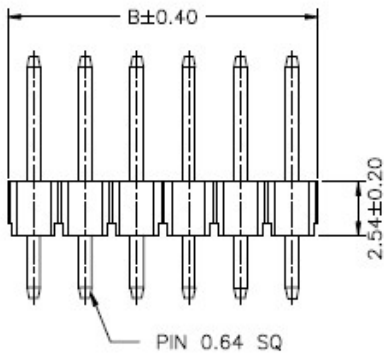
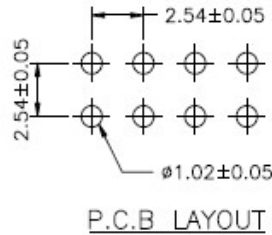
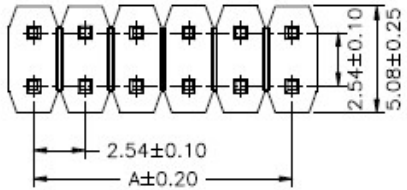
Insulation Resistance : 1000mΩ Min.

Withstanding Voltage : 1500V AC/minute

Insulator Material : PBT+GF, UL 94-V0

Ordering Information & Dimension

PART NO.	Dimensions		PART NO.	Dimensions		PART NO.	Dimensions	
	A	B		A	B		A	B
2X02P	2.54	5.08	2X15P	35.56	38.10	2X28P	68.58	71.12
2X03P	5.08	7.62	2X16P	38.10	40.64	2X29P	71.12	73.66
2X04P	7.62	10.16	2X17P	40.64	43.18	2X30P	73.66	76.20
2X05P	10.16	12.70	2X18P	43.18	45.72	2X31P	76.20	78.74
2X06P	12.70	15.24	2X19P	45.72	48.26	2X32P	78.74	81.28
2X07P	15.24	17.78	2X20P	48.26	50.80	2X33P	81.28	83.82
2X08P	17.78	20.32	2X21P	50.80	53.34	2X34P	83.82	86.36
2X09P	20.32	22.86	2X22P	53.34	55.88	2X35P	86.36	88.90
2X10P	22.86	25.40	2X23P	55.88	58.42	2X36P	88.90	91.44
2X11P	25.40	27.94	2X24P	58.42	60.96	2X37P	91.44	93.98
2X12P	27.94	30.48	2X25P	60.96	63.50	2X38P	93.98	96.52
2X13P	30.48	33.02	2X26P	63.50	66.04	2X39P	96.52	99.06
2X14P	33.02	35.56	2X27P	66.04	68.58	2X40P	99.06	101.60



DESCRIPTION :
**2.54mm Pitch,
 Pin Header, Dual Row, DIP,
 Straight Type**

PART NO. :
2546JVDXX-0BK2

GENERAL TOLERANCE

X.X ± 0.25
 X.XX ± 0.15
 X.XXX ± 0.05

SCALE : Free

