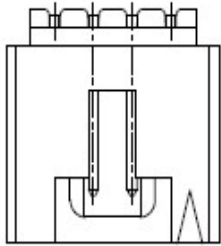
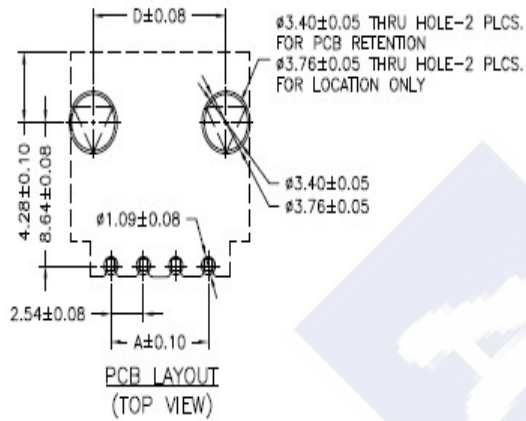
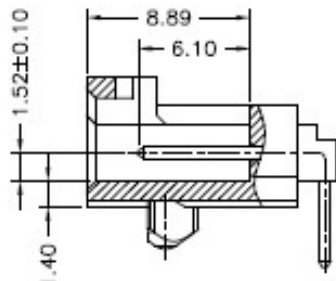
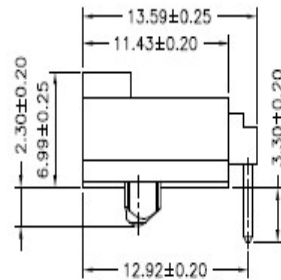
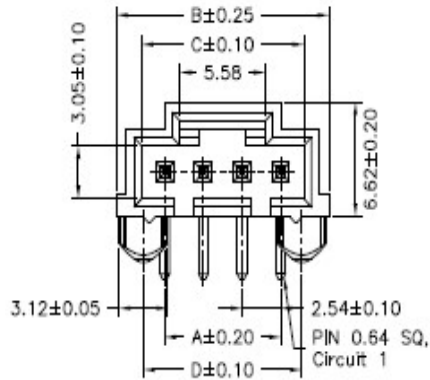


RoHS

Reach

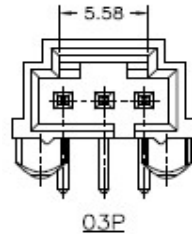


(TOP VIEW)

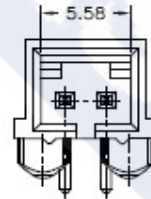
PCB LAYOUT
(TOP VIEW)

Ordering Information & Dimension

| Circuit No. | Dimensions | | | |
|-------------|------------|-------|-------|-------|
| | A | B | C | D |
| 02 | 2.54 | 8.89 | --- | 5.33 |
| 03 | 5.08 | 11.43 | 8.12 | 7.87 |
| 04 | 7.62 | 13.97 | 10.66 | 10.41 |
| 05 | 10.16 | 16.51 | 13.20 | 12.95 |
| 06 | 12.70 | 19.05 | 15.74 | 15.49 |
| 07 | 15.24 | 21.59 | 18.28 | 18.03 |
| 08 | 17.78 | 24.13 | 20.82 | 20.57 |
| 09 | 20.32 | 26.67 | 23.36 | 23.11 |
| 10 | 22.86 | 29.21 | 25.90 | 25.65 |
| 11 | 25.40 | 31.75 | 28.44 | 28.19 |
| 12 | 27.94 | 34.29 | 30.98 | 30.73 |



03P



02P

Explanation of PN.

2541J R F XX - X BK 2

① ② ③ ④ ⑤ ⑥ ⑦

- ① Series No.
- ② Connector Type : Right Angle
- ③ Option Type : With Foot
- ④ Circuits No.
- ⑤ Insulator Material : 0 : PBT+GF, UL 94-V0
4 : Nylon6T, UL 94-V0
- ⑥ Color : BK : Black
- ⑦ Contact Plating : 2 : Gold-flash

Specification :

Current Rating : 3A AC,DC

Voltage Rating : 250V AC,DC

Temperature Range : -25°C ~ +85°C


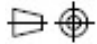
Contact Resistance : 20mΩ Max.

Insulation Resistance : 1000mΩ Min.

Withstanding Voltage : 1500V AC/minute

Pin Material : Brass

Insulator Material : PBT+GF, UL 94-V0 or
Nylon6T, UL 94-V0

| | | | |
|--|---|---|---|
|  | DESCRIPTION : 2.54mm Pitch, Receptacle, Single Row, DIP, Right Angle, With Foot | GENERAL TOLERANCE | |
| | PART NO. : 2541JRFXX-XBK2 | X.X ± 0.25 X.XX ± 0.15 X.XXX ± 0.05 | SCALE : Free  |