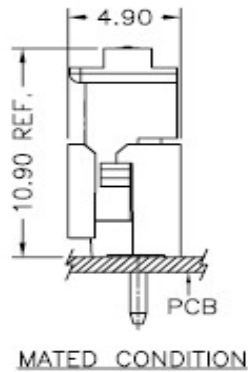
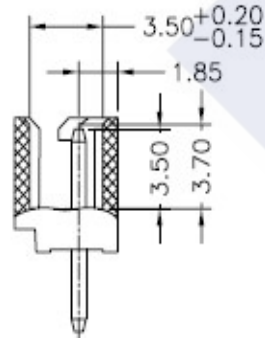
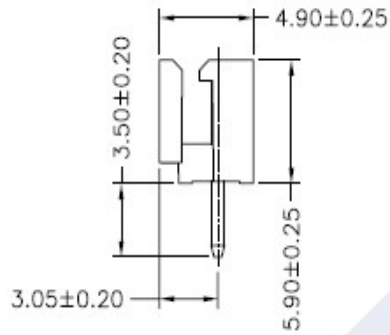
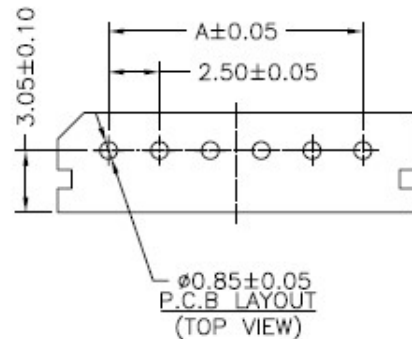
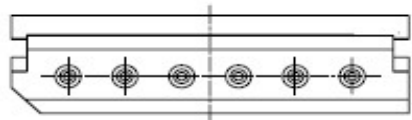
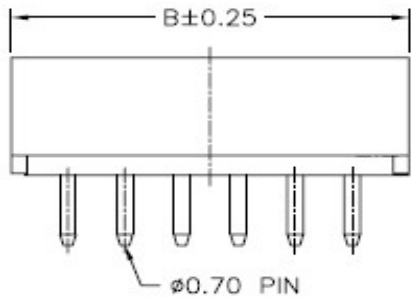
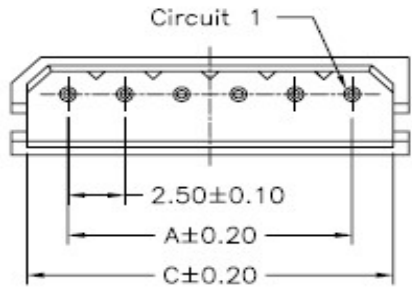


RoHS

Reach



Ordering Information & Dimension

Circuit No.	Dimensions		
	A	B	C
02	2.50	7.50	6.12
03	5.00	10.00	8.62
04	7.50	12.50	11.12
05	10.00	15.00	13.62
06	12.50	17.50	16.12
07	15.00	20.00	18.62
08	17.50	22.50	21.12
09	20.00	25.00	23.62
10	22.50	27.50	26.12
11	25.00	30.00	28.62
12	27.50	32.50	31.12
13	30.00	35.00	33.62
14	32.50	37.50	36.12
15	35.00	40.00	38.62
16	37.50	42.50	41.12

Explanation of PN.

2506J V XX - X XX 0

① ② ③ ④ ⑤ ⑥

- ① Series No.
- ② Connector Type : Straight Angle
- ③ Circuits No.
- ④ Insulator Material : 3 : Nylon66, UL 94-V0
7 : Nylon66, UL 94-V2(No Flame)
- ⑤ Color : NL : Natural(Beige) -- Nylon66, UL 94-V0
BK : Black -- Nylon66, UL 94-V0
NL : Natural (Beige) -- Nylon66, UL 94-V2(No Flame)
- ⑥ Contact Plating : 0 : Tin-plated

Specification :

Current Rating : 3A AC,DC

Voltage Rating : 250V AC,DC

Temperature Range : -25°C ~ +85°C

Contact Resistance : 20mΩ Max.

Insulation Resistance : 1000mΩ Min.

Withstanding Voltage : 1000V AC/minute

Pin Material : Brass

Insulator Material : Nylon66, UL 94-V0 or Nylon66, UL 94-V2(No Flame)

	DESCRIPTION : 2.50mm Pitch, Receptacle, Single Row, DIP, Straight Angle	GENERAL TOLERANCE	
	PART NO. : 2506JVXX-XXX0	X.X ± 0.25 X.XX ± 0.15 X.XXX ± 0.05	SCALE : Free