

RoHS

Reach

## Ordering Information &amp; Dimension

Explanation of PN.

2503J V XX - 2 NL 0

① ② ③ ④ ⑤ ⑥

- ① Series No.
- ② Connector Type : Straight Angle
- ③ Circuits No.
- ④ Insulator Material : 2 : Nylon66, UL 94-V2
- ⑤ Color : NL : Natural(7501C)
- ⑥ Contact Plating : Tin-plated

Specification :

Current Rating : 3A AC,DC

Voltage Rating : 250V AC,DC

Temperature Range : -25°C ~ +85°C

Contact Resistance : 10mΩ Max.

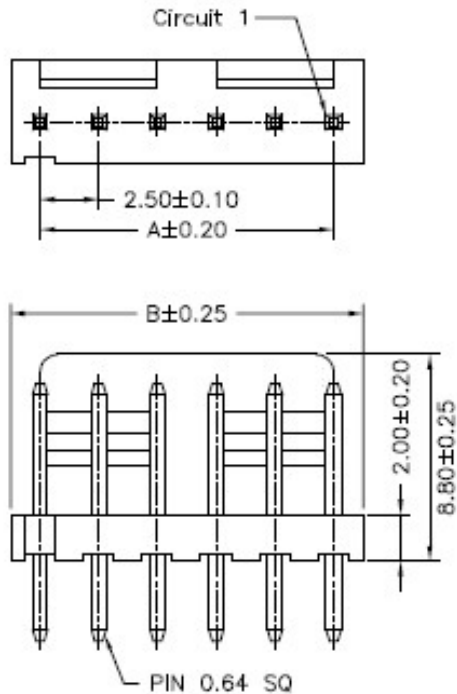
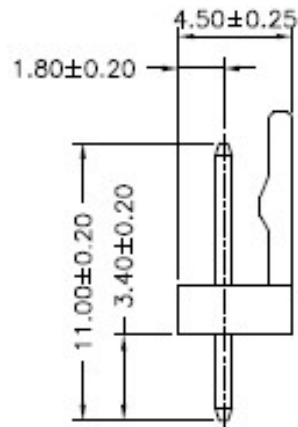
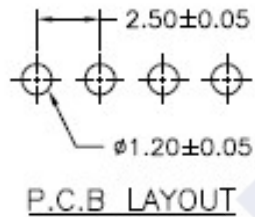
Insulation Resistance : 1000mΩ Min.


Withstanding Voltage : 800V AC/minute

Pin Material : Brass

Insulator Material : Nylon66, UL 94-V2

Circuit NO.	Dimensions	
	A	B
02	2.50	5.00
03	5.00	7.50
04	7.50	10.00
05	10.00	12.50
06	12.50	15.00
07	15.00	17.50
08	17.50	20.00
09	20.00	22.50
10	22.50	25.00
11	25.00	27.50
12	27.50	30.00
13	30.00	32.50
14	32.50	35.00
15	35.00	37.50
16	37.50	40.00
17	40.00	42.50
18	42.50	45.00
19	45.00	47.50
20	47.50	50.00



	<b>DESCRIPTION :</b> 2.50mm Pitch, Receptacle, Single Row, DIP, Straight Angle	<b>GENERAL TOLERANCE</b>	
	<b>PART NO. :</b> 2503JVXX-2NL0	X.X ± 0.25 X.XX ± 0.15 X.XXX ± 0.05	SCALE : Free 