

RoHS

Reach

Explanation of PN.

2502J V XX - 3 WH 0

① ② ③ ④ ⑤ ⑥

- ① Series No.
 ② Connector Type : Straight Angle
 ③ Circuits No.
 ④ Insulator Material : 3 : Nylon66, UL 94-V0
 ⑤ Color : WH : White
 ⑥ Contact Plating : Tin-plated

Ordering Information & Dimension

Circuit NO.	Dimensions	
	A	B
02	2.50	7.50
03	5.00	10.00
04	7.50	12.50
05	10.00	15.00
06	12.50	17.50
07	15.00	20.00
08	17.50	22.50
09	20.00	25.00
10	22.50	27.50
11	25.00	30.00
12	27.50	32.50
13	30.00	35.00
14	32.50	37.50
15	35.00	40.00

Specification :

Current Rating : 3A AC,DC

Voltage Rating : 250V AC,DC

Temperature Range : -25°C ~ +85°C

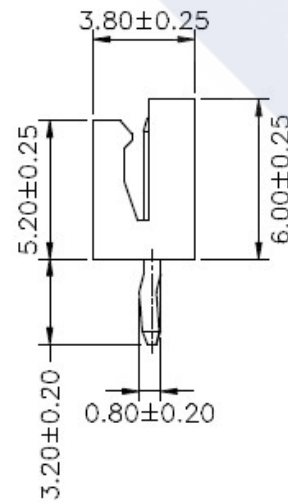
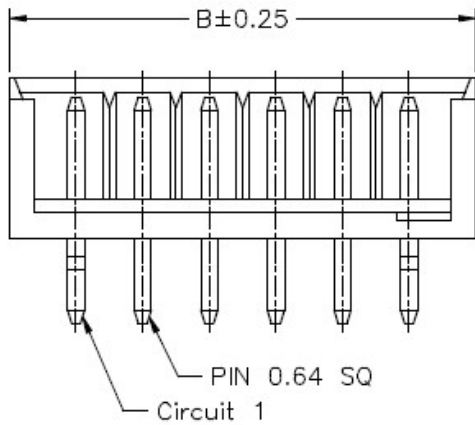
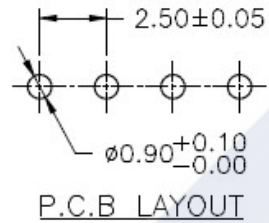
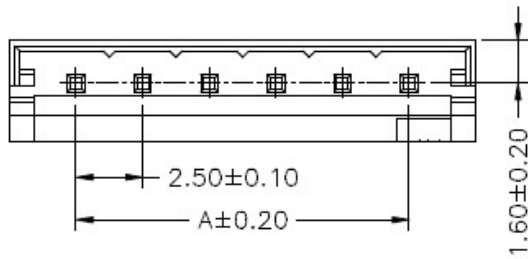
Contact Resistance : 10mΩ Max.

Insulation Resistance : 1000mΩ Min.

Withstanding Voltage : 800V AC/minute

Pin Material : Brass

Insulator Material : Nylon66, UL 94-V0



DESCRIPTION :
 2.50mm Pitch,
 Receptacle, Single Row, DIP,
 Straight Angle

PART NO. :
 2502JVXX-3WH0

GENERAL TOLERANCE

X.X ± 0.25
 X.XX ± 0.15
 X.XXX ± 0.05

SCALE : Free

