

RoHS

Reach

Explanation of PN.

**2100J R X XX - 3 RD 0**

① ② ③ ④ ⑤ ⑥ ⑦

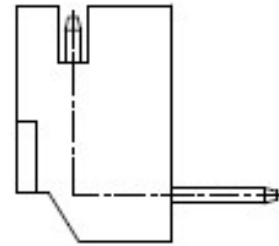
- ① Series No.
- ② Connector Type : Straight Angle
- ③ Option Type : 0 : Without Pin Kink  
1 : With Pin Kink
- ④ Circuits No.
- ⑤ Insulator Material : 3 : Nylon66, UL 94-V0
- ⑥ Color : RD : Red(153C~154C)
- ⑦ Contact Plating : Tin-plated

Specification :

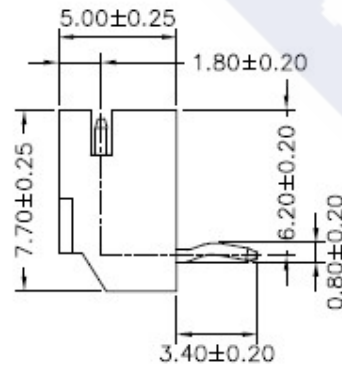
- Current Rating : 3A AC,DC
- Voltage Rating : 300V AC,DC
- Temperature Range : -25°C ~ +85°C
- Contact Resistance : 20mΩ Max.
- Insulation Resistance : 100mΩ Min.
- Withstanding Voltage : 1000V AC/minute
- Pin Material : Brass
- Insulator Material : Nylon66, UL 94-V0

Ordering Information & Dimension

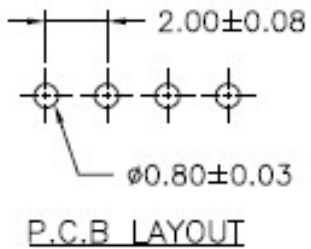
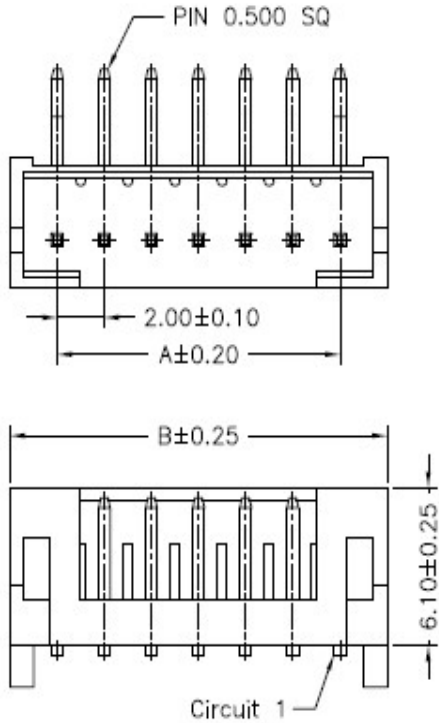
| Circuit NO. | Dimensions |       |
|-------------|------------|-------|
|             | A          | B     |
| 02          | 2.00       | 6.00  |
| 03          | 4.00       | 8.00  |
| 04          | 6.00       | 10.00 |
| 05          | 8.00       | 12.00 |
| 06          | 10.00      | 14.00 |
| 07          | 12.00      | 16.00 |
| 08          | 14.00      | 18.00 |
| 09          | 16.00      | 20.00 |
| 10          | 18.00      | 22.00 |
| 11          | 20.00      | 24.00 |
| 12          | 22.00      | 26.00 |
| 13          | 24.00      | 28.00 |
| 14          | 26.00      | 30.00 |
| 15          | 28.00      | 32.00 |



Without Pin Kink



With Pin Kink



|  |  |   |                      |
|--|--|---|----------------------|
|  | <b>DESCRIPTION :</b><br>2.00mm Pitch,<br>Receptacle, Single Row, DIP,<br>Right Angle | <b>GENERAL TOLERANCE</b>                  |                      |
|  | <b>PART NO. :</b><br>2100JRXXX-3RD0  | X.X ± 0.25<br>X.XX ± 0.15<br>X.XXX ± 0.05 | SCALE : Free<br><br> |