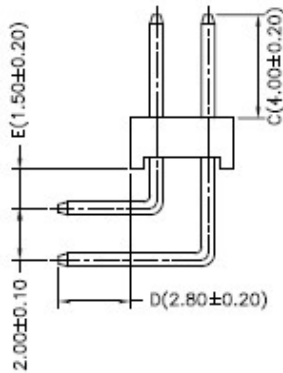
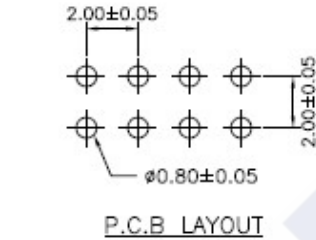
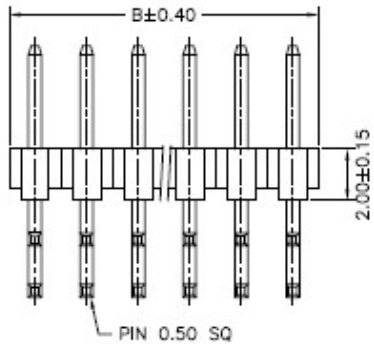
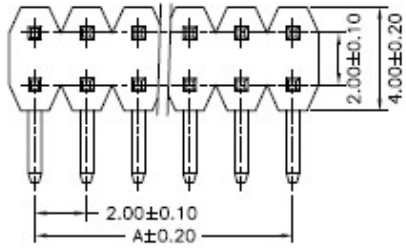


RoHS

Reach



Ordering Information & Dimension

| Circuit NO. | Dimensions | | Circuit NO. | Dimensions | |
|-------------|------------|-------|-------------|------------|-------|
| | A | B | | A | B |
| 04 | 2.00 | 4.00 | 44 | 42.00 | 44.00 |
| 06 | 4.00 | 6.00 | 46 | 44.00 | 46.00 |
| 08 | 6.00 | 8.00 | 48 | 46.00 | 48.00 |
| 10 | 8.00 | 10.00 | 50 | 48.00 | 50.00 |
| 12 | 10.00 | 12.00 | 52 | 50.00 | 52.00 |
| 14 | 12.00 | 14.00 | 54 | 52.00 | 54.00 |
| 16 | 14.00 | 16.00 | 56 | 54.00 | 56.00 |
| 18 | 16.00 | 18.00 | 58 | 56.00 | 58.00 |
| 20 | 18.00 | 20.00 | 60 | 58.00 | 60.00 |
| 22 | 20.00 | 22.00 | 62 | 60.00 | 62.00 |
| 24 | 22.00 | 24.00 | 64 | 62.00 | 64.00 |
| 26 | 24.00 | 26.00 | 66 | 64.00 | 66.00 |
| 28 | 26.00 | 28.00 | 68 | 66.00 | 68.00 |
| 30 | 28.00 | 30.00 | 70 | 68.00 | 70.00 |
| 32 | 30.00 | 32.00 | 72 | 70.00 | 72.00 |
| 34 | 32.00 | 34.00 | 74 | 72.00 | 74.00 |
| 36 | 34.00 | 36.00 | 76 | 74.00 | 76.00 |
| 38 | 36.00 | 38.00 | 78 | 76.00 | 78.00 |
| 40 | 38.00 | 40.00 | 80 | 78.00 | 80.00 |
| 42 | 40.00 | 42.00 | | | |

Explanation of PN.

2016J V D XX - 0 BK 2

① ② ③ ④ ⑤ ⑥ ⑦

- ① Series No.
- ② Connector Type : Straight Angle
- ③ Row Type : Dual Row
- ④ Circuits No.
- ⑤ Insulator Material : 0 : PBT+GF, UL 94-V0
- ⑥ Color : BK : Black
- ⑦ Contact Plating : Gold-flash

Specification :

Current Rating : 2A AC,DC

Voltage Rating : 250V AC,DC

Temperature Range : -25°C ~ +85°C



Contact Resistance : 20mΩ Max.

Insulation Resistance : 1000mΩ Min.

Withstanding Voltage : 1000V AC/minute

Pin Material : Brass

Insulator Material : PBT+GF, UL 94-V0

| | | | |
|--|--|---|---|
|  | DESCRIPTION : 2.00mm Pitch, Pin Header, Dual Row, DIP, Right Angle | GENERAL TOLERANCE | |
| | PART NO. : 2016JRDXX-0BK2 | X.X ± 0.25 X.XX ± 0.15 X.XXX ± 0.05 | SCALE : Free  |