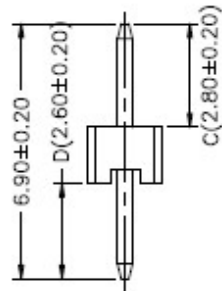
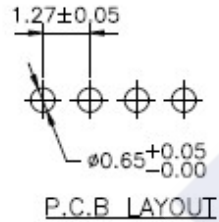
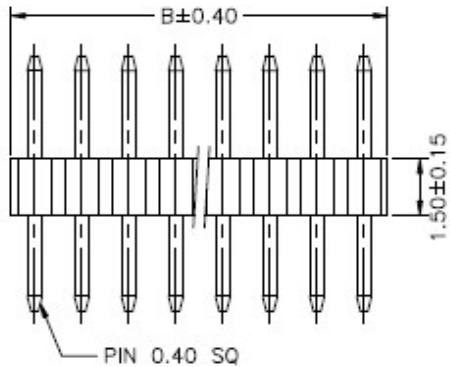
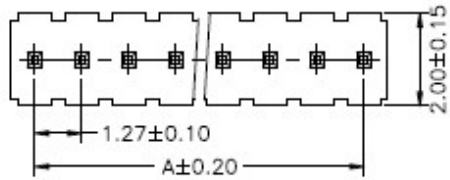


RoHS

Reach



Ordering Information & Dimension

Circuits No.	Dimensions		Circuits No.	Dimensions	
	A	B		A	B
03	2.54	3.81	18	21.59	22.86
04	3.81	5.08	19	22.86	24.13
05	5.08	6.35	20	24.13	25.40
06	6.35	7.62	21	25.40	26.67
07	7.62	8.89	22	26.67	27.94
08	8.89	10.16	23	27.94	29.21
09	10.16	11.43	24	29.21	30.48
10	11.43	12.70	25	30.48	31.75
11	12.70	13.97	26	31.75	33.02
12	13.97	15.24	27	33.02	34.29
13	15.24	16.51	28	34.29	35.56
14	16.51	17.78	29	35.56	36.83
15	17.78	19.05	30	36.83	38.10
16	19.05	20.32	31	38.10	39.37
17	20.32	21.59	32	39.37	40.64

Explanation of PN.


1271J V XX - 4 BK 2

① ② ③ ④ ⑤ ⑥

- ① Series No.
- ② Connector Type : Straight Angle
- ③ Circuits No.
- ④ Insulator Material : 4 : Nylon6T, UL 94-V0
- ⑤ Color : BK : Black
- ⑥ Contact Plating : 2 : Gold-flash

Specification :

Current Rating :	1A AC,DC
Voltage Rating :	250V AC,DC
Temperature Range :	-25°C ~ +85°C
Contact Resistance :	20mΩ Max.
Insulation Resistance :	5000mΩ Min.
Withstanding Voltage :	500V AC/minute
Pin Material :	Brass
Insulator Material :	Nylon6T, UL 94-V0

	DESCRIPTION : 1.27mm Pitch, Pin Header, Single Row, DIP, Straight Angle	GENERAL TOLERANCE	
	PART NO. : 1271JVXX-4BK2	X.X ± 0.25 X.XX ± 0.15 X.XXX ± 0.05	SCALE : Free 