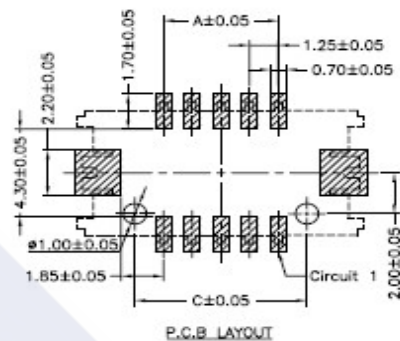
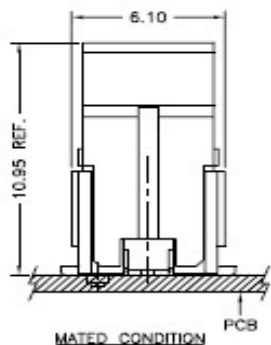
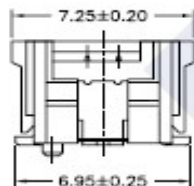
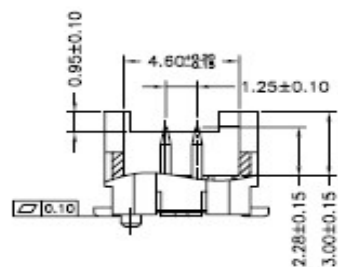
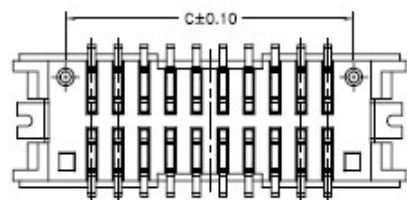
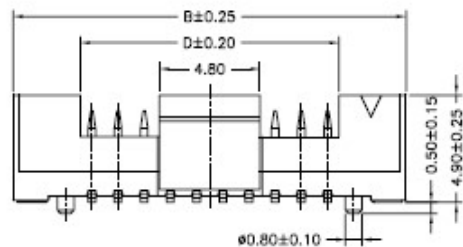
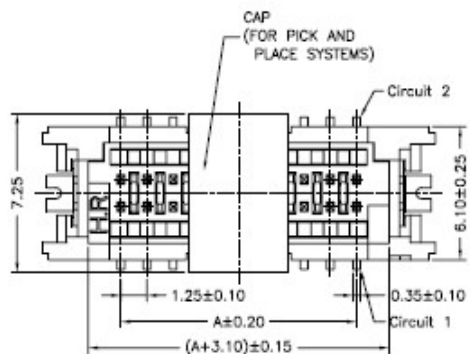


RoHS

Reach



Ordering Information & Dimension

Circuit NO.	Dimensions			
	A	B	C	D
10	5.00	12.50	7.50	6.10
12	6.25	13.75	8.75	7.35
14	7.50	15.00	10.00	8.60
20	11.25	18.75	13.75	12.35
30	17.50	25.00	20.00	18.60
34	20.00	27.50	22.50	21.10
36	21.25	28.75	23.75	22.35
40	23.75	31.25	26.25	24.85
42	25.00	32.50	27.50	26.10

Explanation of PN.

1252J VA F S D XX - 4 NL 2 2

① ② ③ ④ ⑤ ⑥ ⑦ ⑧ ⑨ ⑩

- ① Series No.
- ② Connector Type : Straight Angle A Type
- ③ Option Type : With Foot
- ④ Mounting Type : SMD Type
- ⑤ Row Type : Dual Row
- ⑥ Circuits No.
- ⑦ Insulator Material : 4 : Nylon6T, UL 94-V0
- ⑧ Color : NL : Natural(Beige)
- ⑨ Contact Plating : 2 : Gold-flash
- ⑩ Soldering Tab : 2 : Gold-flash

Specification :

- Current Rating : 1A AC,DC
- Voltage Rating : 150V AC,DC
- Temperature Range : -25°C ~ +85°C
- Contact Resistance : 30mΩ Max.
- Insulation Resistance : 500mΩ Min.
- Withstanding Voltage : 500V AC/minute
- Pin Material : Brass
- Soldering Tab : Brass
- Insulator Material : Housing : Nylon6T, UL 94-V0  
Cap : Nylon6T, UL 94-V0

	<b>DESCRIPTION :</b> 1.25mm Pitch, Receptacle, Dual Row, SMD, Straight Angle, With Foot, A Type	<b>GENERAL TOLERANCE</b>	
	<b>PART NO. :</b> 1252JVAFSDXX-4NL22	X.X ± 0.25 X.XX ± 0.15 X.XXX ± 0.05	SCALE : Free  