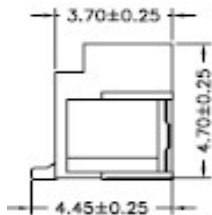
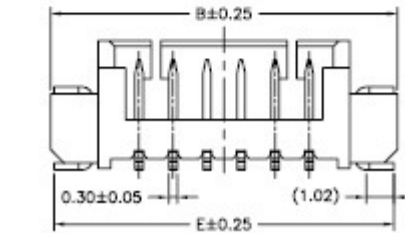
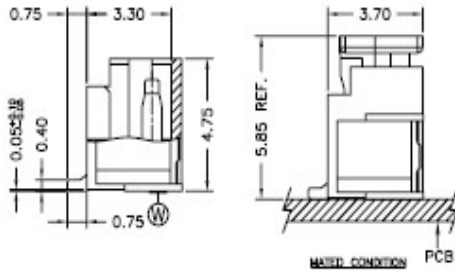
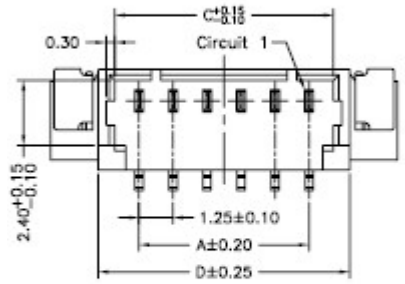
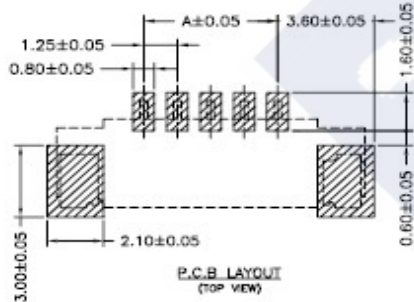
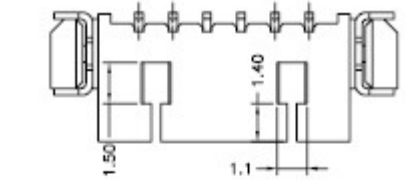
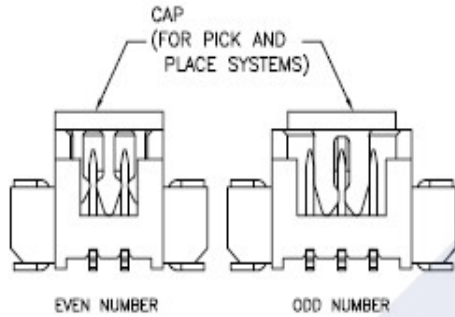
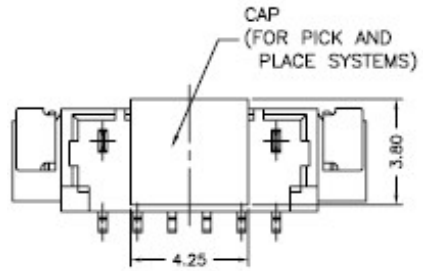


RoHS

Reach



Ordering Information & Dimension

Circuit No.	Dimensions				
	A	B	C	D	E
02P	1.25	7.75	3.05	4.25	7.50
03P	2.50	9.00	4.30	5.50	8.75
04P	3.75	10.25	5.55	6.75	10.00
05P	5.00	11.50	6.80	8.00	11.25
06P	6.25	12.75	8.05	9.25	12.50
07P	7.50	14.00	9.30	10.50	13.75
08P	8.75	15.25	10.55	11.75	15.00
09P	10.00	16.50	11.80	13.00	16.25
10P	11.25	17.75	13.05	14.25	17.50
11P	12.50	19.00	14.30	15.50	18.75
12P	13.75	20.25	15.55	16.75	20.00
13P	15.00	21.50	16.80	18.00	21.25
14P	16.25	22.75	18.05	19.25	22.50
15P	17.50	24.00	19.30	20.50	23.75
16P	18.75	25.25	20.55	21.75	25.00
17P	20.00	26.50	21.80	23.00	26.25
18P	21.25	27.75	23.05	24.25	27.50

Explanation of PN.

**1250J V S XX - 4 NL X X**

① ② ③ ④ ⑤ ⑥ ⑦ ⑧

- ① Series No.
- ② Connector Type : Straight Angle
- ③ Mounting Type : SMD
- ④ Circuits No.
- ⑤ Insulator Material : Nylon6T, UL 94-V0
- ⑥ Color : Natural(Beige)
- ⑦ Contact Plating : 0.Matte Tin-plated ; 3.Gold-flash
- ⑧ Soldering Tab : 0.Matte Tin-plated ; 3.Gold-flash

Specification :

- Current Rating : 1A AC,DC
- Voltage Rating : 125V AC,DC
- Temperature Range : -25°C ~ +85°C
- Contact Resistance : 20mΩ Max.
- Insulation Resistance : 100mΩ Min.
- Withstanding Voltage : 500V AC/minute
- Pin Material : Phosphor Bronze
- Soldering Tab : Phosphor Bronze
- Insulator Material : Housing/Cap : Nylon6T, UL 94-V0
- Color : Natural(Beige)

	<b>DESCRIPTION :</b> 1.25mm Pitch, Receptacle, Single Row, SMD, Straight Angle	<b>GENERAL TOLERANCE</b>	
	<b>PART NO. :</b> 1250JVSXX-4NLXX	X.X ± 0.25 X.XX ± 0.15 X.XXX ± 0.05	SCALE : Free  