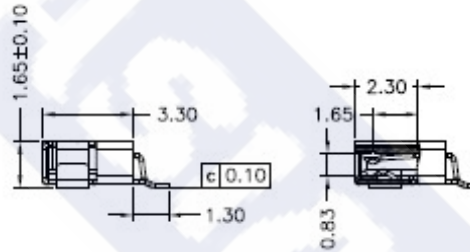
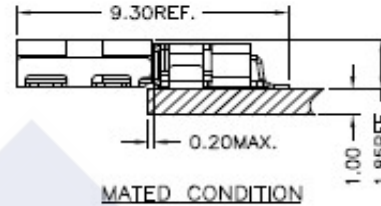
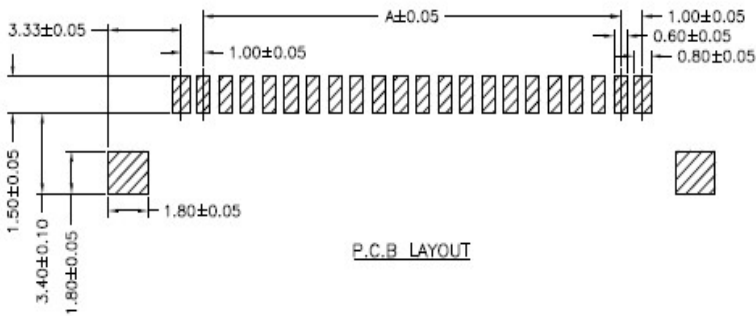
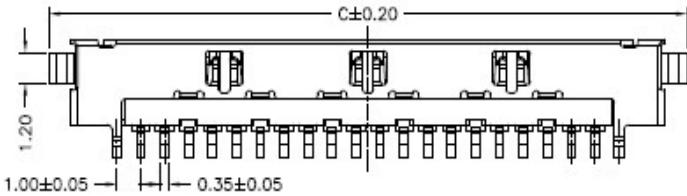
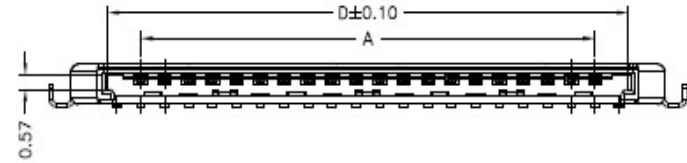
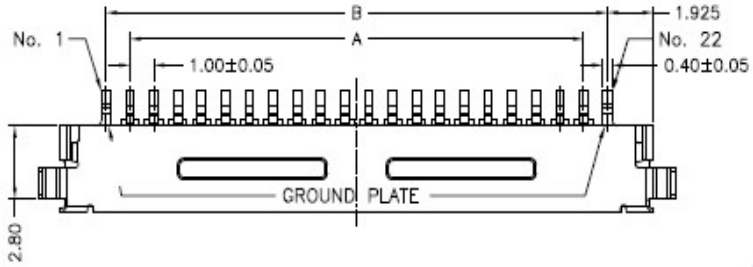


RoHS

Reach



Ordering Information & Dimension

Circuit No.	Dimensions			
	A	B	C	D
20P	19.00	21.00	26.65	22.00
30P	29.00	31.00	36.65	32.00

Explanation of PN.

1006J R S XX - 6 BK 5 0

① ② ③ ④ ⑤ ⑥ ⑦ ⑧

- ① Series No.
- ② Connector Type : Right Angle
- ③ Mounting Type : SMD
- ④ Circuits No.
- ⑤ Insulator Material : LCP, UL 94-V0
- ⑥ Color : Black
- ⑦ Pin Material : Phosphor Bronze/Gold plated in 3u"
- ⑧ Soldering Tab : Phosphor Bronze/Tin plated

Specification :

- Current Rating : 1A AC,DC
- Voltage Rating : 200V AC,DC
- Temperature Range : -25°C ~ +85°C
- Contact Resistance : 40mΩ Max.
- Insulation Resistance : 100mΩ Min.
- Withstanding Voltage : 500V AC/minute
- Pin Material : Phosphor Bronze/Gold plated in 3u"
- Soldering Tab : Phosphor Bronze/Tin plated
- Shell Material : Phosphor Bronze/Tin plated
- Insulator Material : LCP, UL 94-V0
- Color : Natural(Beige)

	DESCRIPTION : 1.00mm Pitch, Receptacle, SMT, Right Angle	GENERAL TOLERANCE	
	PART NO. : 1006JRSXX-6NL50	X.X ± 0.25 X.XX ± 0.15 X.XXX ± 0.05	SCALE : Free