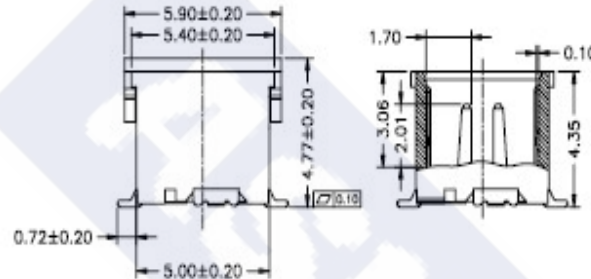
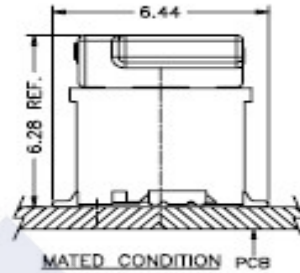
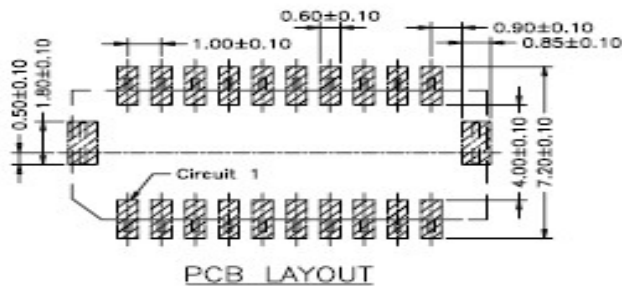
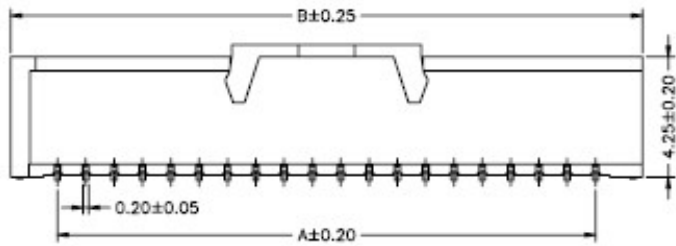
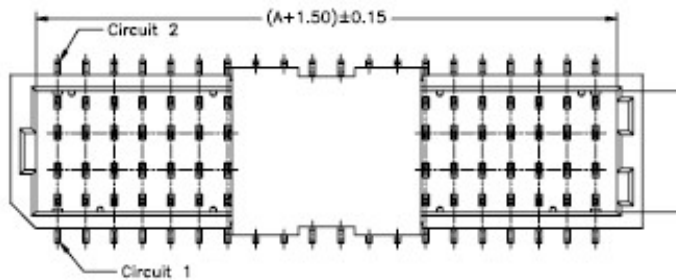
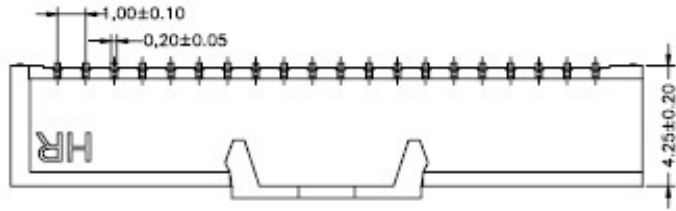


RoHS

Reach



Ordering Information & Dimension

Circuit No.	Dimensions	
	A	B
2X05P	4.00	7.30
2X06P	5.00	8.30
2X08P	7.00	10.30
2X10P	9.00	12.30
2X12P	11.00	14.30
2X15P	14.00	17.30
2X20P	19.00	22.30
2X25P	24.00	27.30

Explanation of PN.

1001J V D S XX - 4 NL X X

① ② ③ ④ ⑤ ⑥ ⑦ ⑧ ⑨

- ① Series No.
- ② Connector Type : Straight Angle
- ③ Row Type : Dual Row
- ④ Mounting Type : SMD
- ⑤ Circuits No.
- ⑥ Insulator Material : Nylon6T, UL 94-V0
- ⑦ Color : Natural(Beige)
- ⑧ Contact Plating : 0.Matte Tin-plated ; 3.Gold-flash
- ⑨ Soldering Tab : 0.Matte Tin-plated ; 3.Gold-flash

Specification :

- Current Rating : 1A AC,DC
- Voltage Rating : 50V AC,DC
- Temperature Range : -25°C ~ +85°C
- Contact Resistance : 20mΩ Max.
- Insulation Resistance : 100mΩ Min.
- Withstanding Voltage : 500V AC/minute
- Pin Material : Phosphor Bronze
- Soldering Tab : Brass
- Insulator Material : Housing/Cap : Nylon6T, UL 94-V0
- Color : Natural(Beige)



DESCRIPTION :
1.00mm Pitch,
Receptacle, Dual Row, SMD,
Right Angle

PART NO. :
1001JVDSXX-4NLXX

GENERAL TOLERANCE

X.X ± 0.25
X.XX ± 0.15
X.XXX ± 0.05

SCALE : Free

