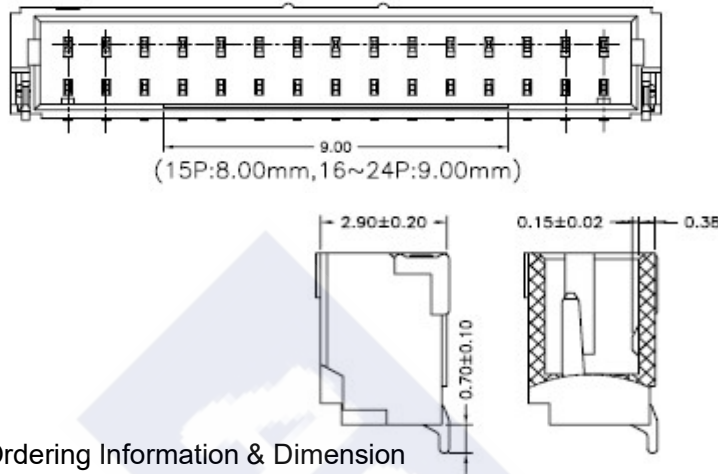
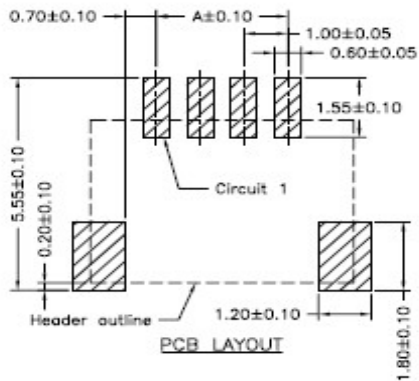
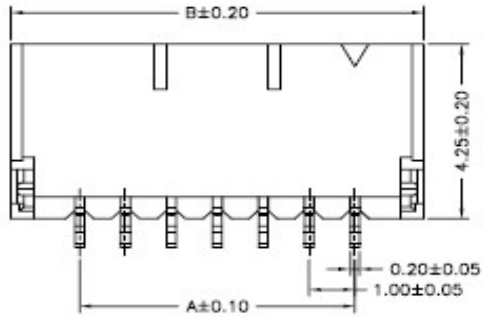
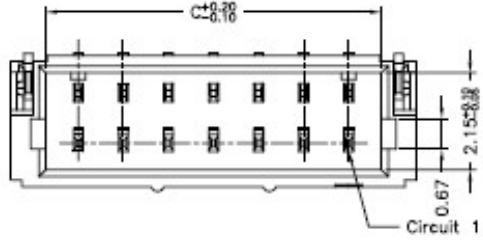


RoHS

Reach



Ordering Information & Dimension

Circuit NO.	Dimensions			Circuit NO.	Dimensions		
	A	B	C		A	B	C
02	1.00	4.00	2.45	12	11.00	14.00	12.45
03	2.00	5.00	3.45	13	12.00	15.00	13.45
04	3.00	6.00	4.45	14	13.00	16.00	14.45
05	4.00	7.00	5.45	15	14.00	17.00	15.45
06	5.00	8.00	6.45	16	15.00	18.00	16.45
07	6.00	9.00	7.45	17	16.00	19.00	17.45
08	7.00	10.00	8.45	18	17.00	20.00	18.45
09	8.00	11.00	9.45	19	18.00	21.00	19.45
10	9.00	12.00	10.45	20	19.00	22.00	20.45
11	10.00	13.00	11.45	24	23.00	26.00	24.45

Explanation of PN.

1001J R S XX - 4 NL X X

① ② ③ ④ ⑤ ⑥ ⑦ ⑧

- ① Series No.
- ② Connector Type : Right Angle
- ③ Mounting Type : SMD
- ④ Circuits No.
- ⑤ Insulator Material : Nylon6T, UL 94-V0
- ⑥ Color : Natural(Beige)
- ⑦ Pin Material : 0.Matte Tin-plated ; 3.Gold-flash
- ⑧ Soldering Tab : 0.Matte Tin-plated ; 3.Gold-flash

Specification :

- Current Rating : 1A AC,DC
- Voltage Rating : 50V AC,DC
- Temperature Range : -25°C ~ +85°C
- Contact Resistance : 20mΩ Max.
- Insulation Resistance : 100mΩ Min.
- Withstanding Voltage : 500V AC/minute
- Pin Material : Phosphor Bronze
- Soldering Tab : Brass
- Insulator Material : Nylon6T, UL 94-V0
- Color : Natural(Beige)



DESCRIPTION :
1.00mm Pitch,
Receptacle, Single row, SMD,
Right Angle

PART NO. :
1001JRSXX-4NLXX

GENERAL TOLERANCE

X.X ± 0.25
X.XX ± 0.15
X.XXX ± 0.05

SCALE : Free

