

RoHS

Reach

Explanation of PN.

1502J H R XX - 3 WH

① ② ③ ④ ⑤ ⑥

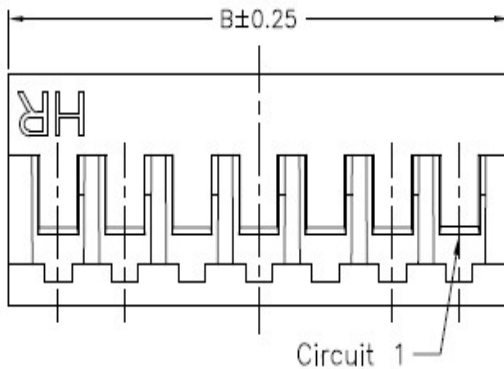
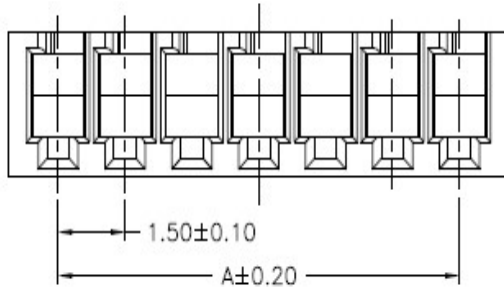
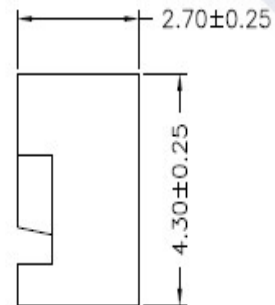
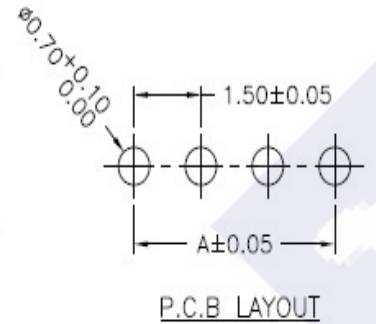
- ① Series No.
- ② Connector Type : Housing
- ③ Option Type : **Horizontal** Type
- ④ Circuits No.
- ⑤ Insulator Material : 3 : Nylon66, UL 94-V0
- ⑥ Color : WH : White

Specification :

Current Rating : 2A AC,DC
 Voltage Rating : 250V AC,DC
 Temperature Range : -25°C ~ +85°C
 Contact Resistance : 20mΩ Max.
 Insulation Resistance : 1000mΩ Min.
 Withstanding Voltage : 800V AC/minute
 Insulator Material : Nylon66, UL 94-V0

Ordering Information & Dimension

Circuits No.	Dimensions	
	A	B
02	1.50	3.70
03	3.00	5.20
04	4.50	6.70
05	6.00	8.20
06	7.50	9.70
07	9.00	11.20
08	10.50	12.70
09	12.00	14.20
10	13.50	15.70
11	15.00	17.20
12	16.50	18.70
13	18.00	20.20
14	19.50	21.70
15	21.00	23.20



DESCRIPTION :
1.50mm Pitch, Housing,
Single row, Horizontal Type

PART NO. :
1502JHRXX-3WH

GENERAL TOLERANCE

X.X ± 0.25
 X.XX ± 0.15
 X.XXX ± 0.05

SCALE : Free

