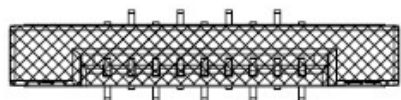
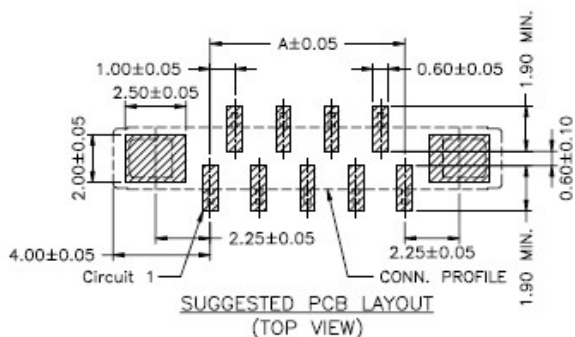
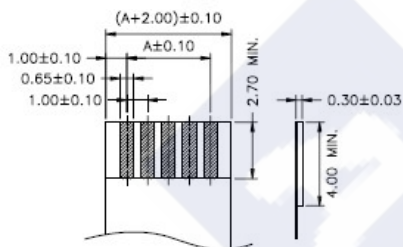
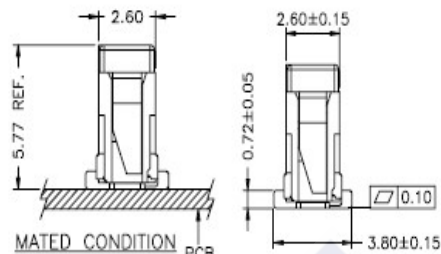
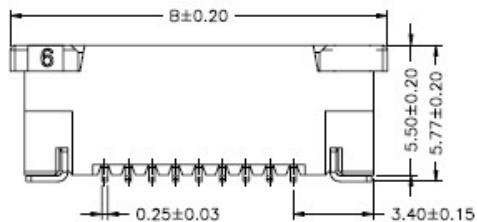
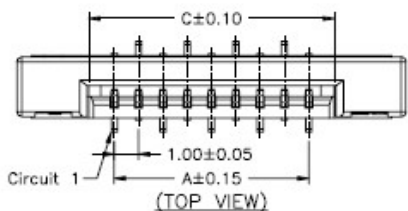


RoHS

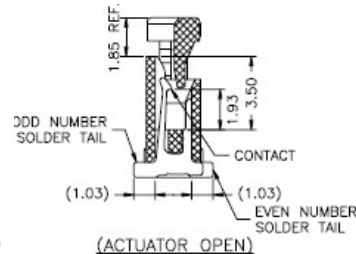
Reach



KAPTON TAPE
(FOR PICK AND PLACE SYSTEMS)



RECOMMENDED FFC/FPC DIMENSION



Ordering Information & Dimension

Circuit No.	Dimensions			Circuit No.	Dimensions		
	A	B	C		A	B	C
04	3.00	11.00	5.10	20	19.00	27.00	21.10
05	4.00	12.00	6.10	21	20.00	28.00	22.10
06	5.00	13.00	7.10	22	21.00	29.00	23.10
07	6.00	14.00	8.10	23	22.00	30.00	24.10
08	7.00	15.00	9.10	24	23.00	31.00	25.10
09	8.00	16.00	10.10	25	24.00	32.00	26.10
10	9.00	17.00	11.10	26	25.00	33.00	27.10
11	10.00	18.00	12.10	27	26.00	34.00	28.10
12	11.00	19.00	13.10	28	27.00	35.00	29.10
13	12.00	20.00	14.10	29	28.00	36.00	30.10
14	13.00	21.00	15.10	30	29.00	37.00	31.10
15	14.00	22.00	16.10	31	30.00	38.00	32.10
16	15.00	23.00	17.10	32	31.00	39.00	33.10
17	16.00	24.00	18.10	33	32.00	40.00	34.10
18	17.00	25.00	19.10	34	33.00	41.00	35.10
19	18.00	26.00	20.10				

Explanation of PN.

1003J V S XX - 6 NL X X

① ② ③ ④ ⑤ ⑥ ⑦ ⑧

- ① Series No.
- ② Connector Type : Straight Angle
- ③ Mounting Type : SMD
- ④ Circuits No.
- ⑤ Insulator Material : Housing : LCP, UL 94-V0
Actuator : Nylon6T, UL 94-V0
- ⑥ Color : Housing : Natural(Beige)
Actuator : Black
- ⑦ Contact Plating : 0.Matte Tin-plated ; 2.Gold-flash
- ⑧ Soldering Tab : 0.Matte Tin-plated ; 2.Gold-flash

Specification :

Current Rating : 0.5A AC,DC

Voltage Rating : 50V AC,DC

Temperature Range : -25°C ~ +85°C

Contact Resistance : 30mΩ Max.

Insulation Resistance : 500mΩ Min.

Withstanding Voltage : 500V AC/minute

Pin Material : Phosphor Bronze

Soldering Tab : Brass

Insulator Material : Housing : LCP, UL 94-V0

Actuator : Nylon6T, UL 94-V0



DESCRIPTION :
1.00mm Pitch,
FPC, ZIF, SMD, Straight Angle

PART NO. :
1003JVSXX-6NLXX

GENERAL TOLERANCE

X.X ± 0.25
X.XX ± 0.15
X.XXX ± 0.05

SCALE : Free

