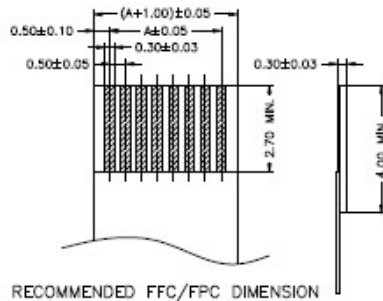
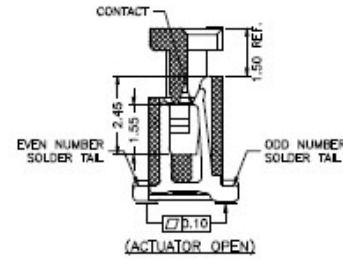
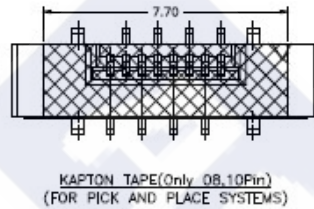
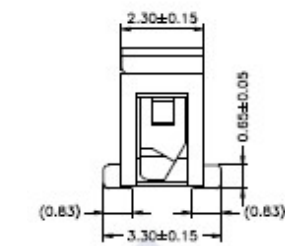
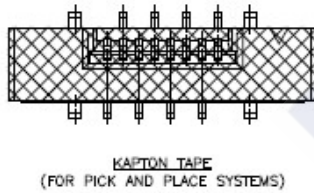
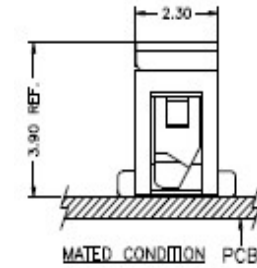
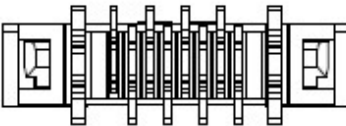
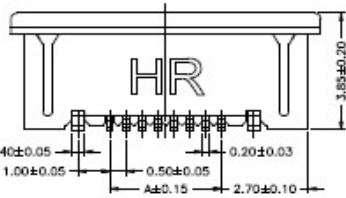
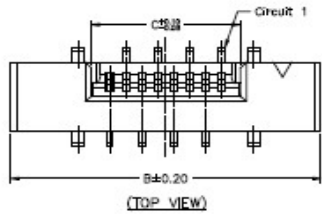
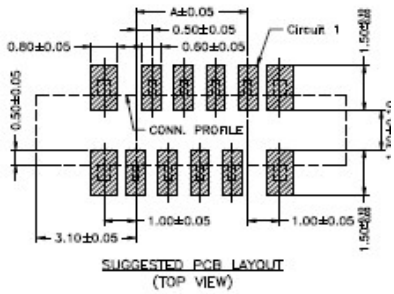


RoHS

Reach



Ordering Information & Dimension

| Circuit No. | Dimensions | | | Circuit No. | Dimensions | | |
|-------------|------------|-------|-------|-------------|------------|-------|-------|
| | A | B | C | | A | B | C |
| 04P | 1.50 | 7.70 | 2.65 | 23P | 11.00 | 17.20 | 12.15 |
| 05P | 2.00 | 8.20 | 3.15 | 24P | 11.50 | 17.70 | 12.65 |
| 06P | 2.50 | 8.70 | 3.65 | 25P | 12.00 | 18.20 | 13.15 |
| 07P | 3.00 | 9.20 | 4.15 | 26P | 12.50 | 18.70 | 13.65 |
| 08P | 3.50 | 9.70 | 4.65 | 27P | 13.00 | 19.20 | 14.15 |
| 09P | 4.00 | 10.20 | 5.15 | 28P | 13.50 | 19.70 | 14.65 |
| 10P | 4.50 | 10.70 | 5.65 | 29P | 14.00 | 20.20 | 15.15 |
| 11P | 5.00 | 11.20 | 6.15 | 30P | 14.50 | 20.70 | 15.65 |
| 12P | 5.50 | 11.70 | 6.65 | 31P | 15.00 | 21.20 | 16.15 |
| 13P | 6.00 | 12.20 | 7.15 | 32P | 15.50 | 21.70 | 16.65 |
| 14P | 6.50 | 12.70 | 7.65 | 33P | 16.00 | 22.20 | 17.15 |
| 15P | 7.00 | 13.20 | 8.15 | 34P | 16.50 | 22.70 | 17.65 |
| 16P | 7.50 | 13.70 | 8.65 | 35P | 17.00 | 23.20 | 18.15 |
| 17P | 8.00 | 14.20 | 9.15 | 36P | 17.50 | 23.70 | 18.65 |
| 18P | 8.50 | 14.70 | 9.65 | 37P | 18.00 | 24.20 | 19.15 |
| 19P | 9.00 | 15.20 | 10.15 | 38P | 18.50 | 24.70 | 19.65 |
| 20P | 9.50 | 15.70 | 10.65 | 39P | 19.00 | 25.20 | 20.15 |
| 21P | 10.00 | 16.20 | 11.15 | 40P | 19.50 | 25.70 | 20.65 |
| 22P | 10.50 | 16.70 | 11.65 | 45P | 22.00 | 28.20 | 23.15 |

Explanation of PN.

0503J V S XX - 6 NL X X

① ② ③ ④ ⑤ ⑥ ⑦ ⑧

- ① Series No.
- ② Connector Type : Straight Angle
- ③ Mounting Type : SMD
- ④ Circuits No.
- ⑤ Insulator Material : Housing : LCP, UL 94-V0
Actuator : LCP, UL 94-V0
- ⑥ Color : Housing : Natural(Beige)
Actuator : Black
- ⑦ Contact Plating : 0.Matte Tin-plated ; 2.Gold-flash
- ⑧ Soldering Tab : 0.Matte Tin-plated ; 2.Gold-flash

Specification :

- Current Rating : 0.5A AC,DC
- Voltage Rating : 50V AC,DC
- Temperature Range : -25°C ~ +85°C
- Contact Resistance : 30mΩ Max.
- Insulation Resistance : 100mΩ Min.
- Withstanding Voltage : 250V AC/minute
- Pin Material : Phosphor Bronze
- Soldering Tab : Brass
- Insulator Material : Housing/Actuator : LCP, UL 94-V0

| | | | |
|--|--|---|------------------|
| | DESCRIPTION : 0.50mm Pitch, FPC, ZIF, SMD, Straight Angle | GENERAL TOLERANCE | |
| | PART NO. : 0503JVSXX-6NLXX | X.X ± 0.25 X.XX ± 0.15 X.XXX ± 0.05 | SCALE : Free |