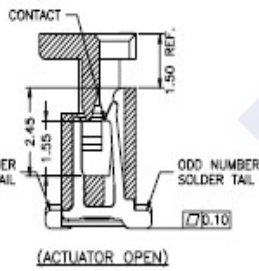
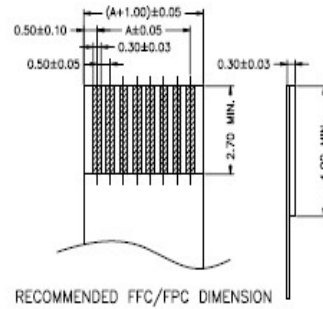
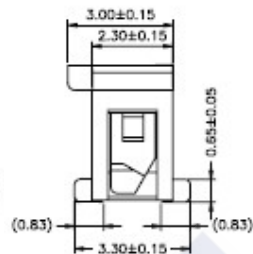
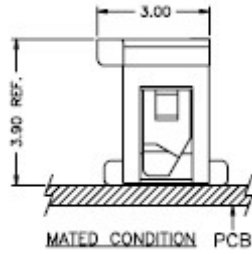
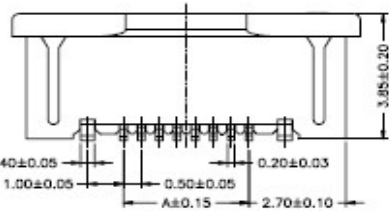
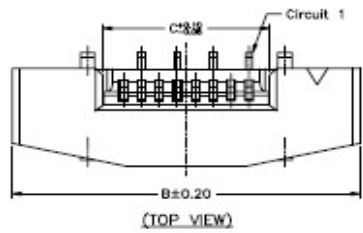
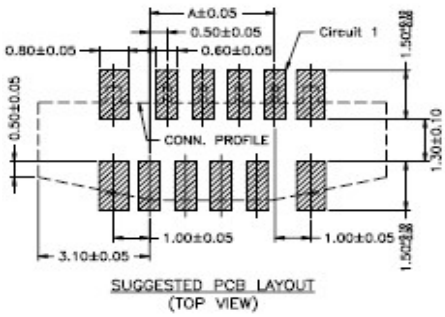


RoHS

Reach



Ordering Information & Dimension

Circuit No.	Dimensions			Circuit No.	Dimensions		
	A	B	C		A	B	C
04P	1.50	7.70	2.65	23P	11.00	17.20	12.15
05P	2.00	8.20	3.15	24P	11.50	17.70	12.65
06P	2.50	8.70	3.65	25P	12.00	18.20	13.15
07P	3.00	9.20	4.15	26P	12.50	18.70	13.65
08P	3.50	9.70	4.65	27P	13.00	19.20	14.15
09P	4.00	10.20	5.15	28P	13.50	19.70	14.65
10P	4.50	10.70	5.65	29P	14.00	20.20	15.15
11P	5.00	11.20	6.15	30P	14.50	20.70	15.65
12P	5.50	11.70	6.65	31P	15.00	21.20	16.15
13P	6.00	12.20	7.15	32P	15.50	21.70	16.65
14P	6.50	12.70	7.65	33P	16.00	22.20	17.15
15P	7.00	13.20	8.15	34P	16.50	22.70	17.65
16P	7.50	13.70	8.65	35P	17.00	23.20	18.15
17P	8.00	14.20	9.15	36P	17.50	23.70	18.65
18P	8.50	14.70	9.65	37P	18.00	24.20	19.15
19P	9.00	15.20	10.15	38P	18.50	24.70	19.65
20P	9.50	15.70	10.65	39P	19.00	25.20	20.15
21P	10.00	16.20	11.15	40P	19.50	25.70	20.65
22P	10.50	16.70	11.65	45P	22.00	28.20	23.15

Explanation of PN.

0500J V A S XX - 6 NL X X  
 ① ② ③ ④ ⑤ ⑥ ⑦ ⑧ ⑨

- ① Series No.
- ② Connector Type : Straight Angle
- ③ Option Type : A Type
- ④ Mounting Type : SMD
- ⑤ Circuits No.
- ⑥ Insulator Material : Housing : LCP, UL 94-V0  
Actuator : Nylon6T, UL 94-V0
- ⑦ Color : Housing : Natural(Beige)  
Actuator : Black
- ⑧ Contact Plating : 0.Matte Tin-plated ; 2.Gold-flash
- ⑨ Soldering Tab : 0.Matte Tin-plated ; 2.Gold-flash

Specification :

- Current Rating : 0.5A AC,DC
- Voltage Rating : 50V AC,DC
- Temperature Range : -25°C ~ +85°C
- Contact Resistance : 30mΩ Max.
- Insulation Resistance : 100mΩ Min.
- Withstanding Voltage : 250V AC/minute
- Pin Material : Phosphor Bronze
- Soldering Tab : Brass
- Insulator Material : Housing : LCP, UL 94-V0  
Actuator : Nylon6T, UL 94-V0

	<b>DESCRIPTION :</b> 0.50mm Pitch, FPC, ZIF, SMD, Straight Angle, A Type	<b>GENERAL TOLERANCE</b>	
	<b>PART NO. :</b> <b>0503JVASXX-6NLXX</b>	X.X ± 0.25 X.XX ± 0.15 X.XXX ± 0.05	SCALE : Free 