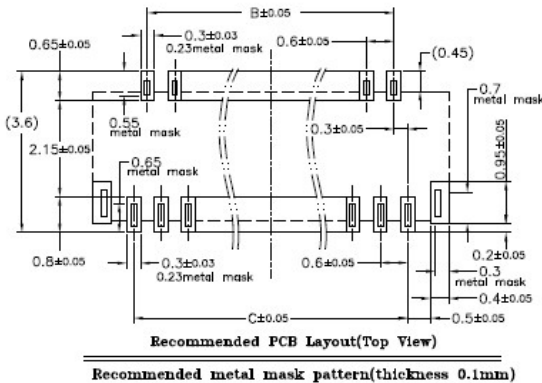
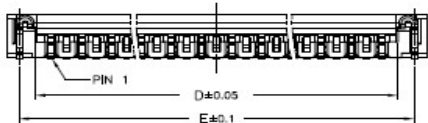
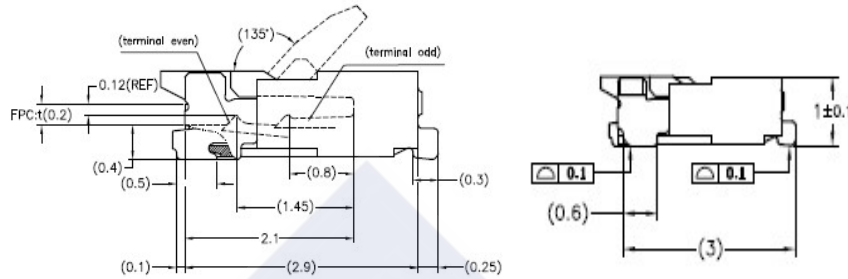
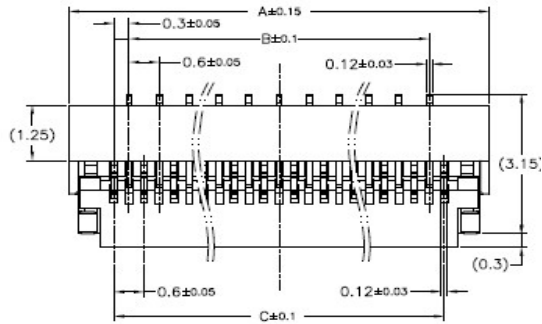


RoHS

Reach



Ordering Information & Dimension

PART NO.	Dimensions					PART NO.	Dimensions				
	A	B	C	D	E		A	B	C	D	E
09P	4.2	1.8	2.4	3.03	3.7	35P	12.0	9.6	10.2	10.83	11.5
11P	4.8	2.4	3.0	3.63	4.3	37P	12.6	10.2	10.8	11.43	12.1
13P	5.4	3.0	3.6	4.23	4.9	39P	13.2	10.8	11.4	12.03	12.7
15P	6.0	3.6	4.2	4.83	5.5	41P	13.8	11.4	12.0	12.63	13.3
17P	6.6	4.2	4.8	5.43	6.1	43P	14.4	12.0	12.6	13.23	13.9
19P	7.2	4.8	5.4	6.03	6.7	45P	15.0	12.6	13.2	13.83	14.5
21P	7.8	5.4	6.0	6.63	7.3	49P	16.2	13.8	14.4	15.03	15.7
23P	8.4	6.0	6.6	7.23	7.9	51P	16.8	14.4	15.0	15.63	16.3
25P	9.0	6.6	7.2	7.83	8.5	57P	18.6	16.2	16.8	17.43	18.1
27P	9.6	7.2	7.8	8.43	9.1	61P	19.8	17.4	18.0	18.63	19.3
29P	10.2	7.8	8.4	9.03	9.7	67P	21.6	19.2	19.8	20.43	21.1
31P	10.8	8.4	9.0	9.63	10.3	71P	22.8	20.4	21.0	21.63	22.3
33P	11.4	9.0	9.6	10.23	10.9						

Explanation of PN.

0301J R B S XX - 6 NL 3 0

① ② ③ ④ ⑤ ⑥ ⑦ ⑧ ⑨

- ① Series No.
- ② Connector Type : Right Angle
- ③ Option Type : Bottom Contact Type
- ④ Mounting Type : SMD
- ⑤ Circuits No.
- ⑥ Insulator Material : Housing : LCP, UL 94-V0
Actuator : LCP, UL 94-V0
- ⑦ Color : Housing : Natural(Beige)
Actuator : Black
- ⑧ Contact Plating : 3.Gold-flash
- ⑨ Soldering Tab : 0.Matte Tin-plated

Specification :

- Current Rating : 0.2A AC,DC
- Voltage Rating : 30V AC,DC
- Temperature Range : -25°C ~ +85°C
- Contact Resistance : 100mΩ Max.
- Insulation Resistance : 50mΩ Min.
- Withstanding Voltage : 250V AC/minute
- Pin Material : Phosphor Bronze
- Soldering Tab : Phosphor Bronze
- Insulator Material : Housing/Actuator : LCP, UL 94-V0

	DESCRIPTION : 0.30mm Pitch, FPC, ZIF, SMD, Right Angle, Bottom Contact Type	GENERAL TOLERANCE	
	PART NO. : 0301JRBSXX-6NL30	X.X ± 0.25 X.XX ± 0.15 X.XXX ± 0.05	SCALE : Free